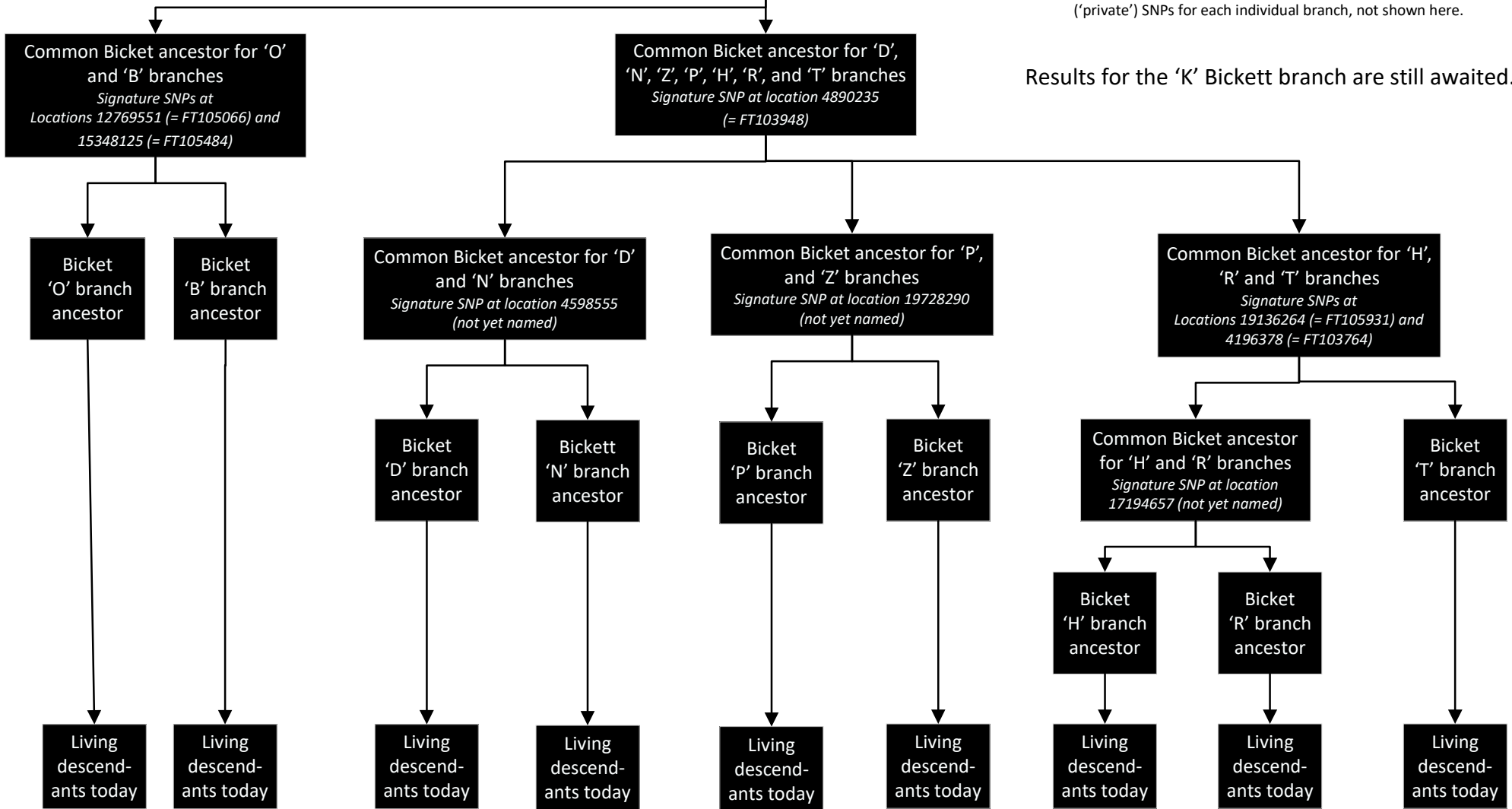


**Relationship of Bicket/Bickett Branches
based on Y-DNA SNP analysis**
Data as of 23 February 2020

**Common Bicket ancestor
born ca 1560-1630**
*Signature SNPs at
Locations 9231735 (= FT104740)
and 11672522 (= FT219207)*

Explanation of SNPs (Single Nucleotide Polymorphisms = single DNA molecule mutation). All Bickets tested have the two common signature SNPs shown for the common Bicket ancestor at the left. As you go down the tree, the additional SNPs are cumulative. For example, those males in the D, N, Z, P, H, R and T branches will have an additional signature SNP at location 4890235. Those males in the H, R and T branches will have an additional signature SNP at location 19136264. Those males in the H and R branches will have an additional signature SNP at location 17194657. There are further unique ('private') SNPs for each individual branch, not shown here.



Results for the 'K' Bickett branch are still awaited.